

Conference

Wednesday 19th May 2010

9.30am – 2.00pm

London

**BOOK
NOW**

☎ 020 7017 0066

or book online at
workingfamilies.org.uk



Top Employers

for Working Families

Best practice case studies
and launch of the 2010
A-Z list and awards

www.workingfamilies.org.uk

Hosted by



Organised by



Conference

Top Employers for Working Families

Wednesday 19th May 2010 9.30am – 2.00pm

Hosted by American Express, Belgrave House, 76 Buckingham Palace Road, London SW1W 9TQ

BOOK NOW

☎ 020 7017 0066

or book online at
workingfamilies.org.uk

This conference offers a unique opportunity to hear best practice case studies from leading employers including organisations which were awarded a place on the 2009 Top Employers for Working Families A-Z list and awards.

Learn what makes a top employer.

There will be a variety of presentations from forward-thinking employers – employers who are on their journey towards becoming diverse and agile organisations for the 21st century.

Hear their latest thinking and initiatives in the areas of flexible working, talent management, fathers and men in the workplace, and supporting employees with childcare and eldercare needs. Delegates will learn how engaging with their employees in this way has enabled them to achieve business success.

Delegates will also have the opportunity to hear at first hand full details on the guidelines and entry criteria for the 2010 Top Employers for Working Families A-Z list and awards.

Launched in 2009, the list recognises employers whose innovation and farsighted practice have created the flexible and engaging workplaces in which working parents and carers can be most productive. Appearing on the list ensures that your organisation is regarded as an employer of choice.

Don't miss out – book your place now

Who should attend?

This conference is aimed at all those with responsibility for talent management, productivity and employee engagement in their organisations, including:

- HR directors and managers
- Diversity & inclusion directors and managers
- Talent managers
- Strategy directors and managers

Benefits of attending

- Hear a variety of best practice case studies from forward thinking employers
- Learn how leading employers are engaging with employees and the business imperative for doing so
- Hear at first hand the details of the guidelines and entry criteria for the 2010 Top Employers for Working Families A-Z list and awards
- Understand what the 2010 judges will be looking for when assessing this year's entries

Conference

Top Employers for Working Families

Wednesday 19th May 2010 9.30am – 2.00pm

Hosted by American Express, Belgrave House, 76 Buckingham Palace Road, London SW1W 9TQ

BOOK NOW

☎ 020 7017 0066

or book online at
workingfamilies.org.uk

The Programme

- 9.00 Registration and coffee
- 9.30 **Welcome**
American Express
- 9.40 **Introduction to the 2010 Top Employers for Working Families A-Z list and awards**
Top tips for top employers: guidelines and criteria for entry
Sarah Jackson OBE, Chief Executive, Working Families
- 10.30 Q & A
- 10.55 Case study:
Flexible working best practices and policy
 - Challenges and solutions**Nina Bhogal, Business Change Manager, National Grid**
- 11.15 Coffee break
- 11.35 Case study:
Women in the pipeline and at the top
 - The journey and progress to advance the leadership pipeline for women
 - Achieving greater momentum through engaging men to tackle the issues and opportunities**Samantha Bidwell, Director of Global Diversity & Inclusion, American Express**
Jonathan Hipkin, VP Controller: UK, Ireland, Central & Eastern Europe & Developing Markets, American Express
- 12.00 Case study:
Supporting employees with childcare and eldercare needs
 - Providing support to parents in finding childcare solutions
 - Managing practical care issues to ensure a balance between work and family
 - Supporting emergency childcare, eldercare and dependent care commitments**Ben Black, Director, My Family Care**
Elizabeth Henry, Senior Manager, Human Resources, Procter and Gamble
- 12.20 Case study:
Learning to harness the engagement of fathers and men at work
 - Changes in the employee demography and mindset at Citi over the last ten years
 - Findings about men and their work environment at Citi
 - Initiatives delivered to address Citi's challenges
 - Outlook onto the future**Laure Fraval, HR Director, Citi**
- 12.40 Q & A
- 1.00 Lunch and networking
- 2.00 Close

Who will be speaking?



Samantha Bidwell
Director of Global Diversity & Inclusion
American Express



Nina Bhogal
Business Change Manager
National Grid



Ben Black
Director
My Family Care



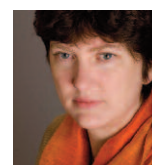
Laure Fraval
HR Director
Citi



Elizabeth Henry
Senior Manager
Human Resources
Procter and Gamble



Jonathan Hipkin
VP Controller: UK, Ireland,
Central & Eastern Europe
& Developing Markets
American Express



Sarah Jackson OBE
Chief Executive
Working Families

Conference

Top Employers for Working Families

Wednesday 19th May 2010 9.30am – 2.00pm

Hosted by American Express, Belgrave House, 76 Buckingham Palace Road, London SW1W 9TQ

BOOK NOW

020 7017 0066

or book online at
workingfamilies.org.uk

Booking Form

Please **PRINT THIS FORM** and complete the details below (IN BLOCK CAPITALS)

Alternatively, book online in the Events Zone at www.workingfamilies.org.uk or request an email booking form on **020 7017 0066** or events@workingfamilies.org.uk

Top Employers for Working Families Conference Hosted by American Express

Costs: Working Families Members: £299.00 +VAT (£351.33)

Non-members: £350.00 +VAT (£411.25)

Delegate Contact Details: (please provide details of additional delegates on a separate form)

First Name Surname

Position Organisation

Address

..... Postcode

Phone Email

Payment Options: (please indicate your payment method below)

Please invoice me at the members'/non-members' rate (please circle) Purchase Order No (if applicable).....

Invoicing Address (if different from above).....

..... Postcode

I enclose a cheque made payable to "Working Families" for a total of £

Please advise us of any dietary or other special requirements:

Cancellations must be received no later than 10 working days before the event. After that date we are unable to give refunds – but you are welcome to send a colleague in your place.

Conference papers: (please tick and then complete delegate contact details and payment options above)

I cannot attend but please reserve me a copy of the conference papers and invoice me for:

Non-Members Rate: £29.99+£2.75p&p/ £49.99 Members Rate: £22.49+£2.75p&p (please circle)

Balance At Work Consultancy: To find out how our consultancy service can help your organisation move forward with its policy and practice, please contact Kirstie Axtens at kirstie.axtens@workingfamilies.org.uk, or call 020 7017 0065.

Occasionally we would like to send you further information about our work. If you do not wish to receive this information please tick here

Hosted by



Please return this booking form to, or for enquiries contact:

Rebecca Christie, Events and Employer Services Manager
Working Families, 1-3 Berry Street, London EC1V 0AA

tel 020 7017 0066 fax 020 7253 6253

email events@workingfamilies.org.uk

